

What are deacon ministry teams?

Romans 12:4-6a

For as in one body we have many members and not all the members have the same function, so we, who are many, are one body in Christ, and individually we are members one of another. We have gifts that differ according to the grace given to us...

Deacon ministry teams are intended to support those that are a part of the First Baptist Church community. These teams are led by current members of the diaconate. In order for these teams to function fully, support is needed from members of the congregation. Together, the deacons and our congregation will work to make sure that our members are cared for.

Our hope is that every church member will consider joining a team based on the gifts and passions that they have been given by God. Together, we will care for this body of Christ through crisis and celebration, joy and sorrow. When we care for one member of the body, we are providing care for the whole body.

We ask you to prayerfully consider which team you would like to join. Simply fill out the form in this brochure and return it to the church office and one of our deacons will get in touch with you to help you get connected to your team(s)!

Contact Us



Phone

540-949-8187



Website

[www.firstbaptistwboro.org/
deacon-ministry-teams](http://www.firstbaptistwboro.org/deacon-ministry-teams)

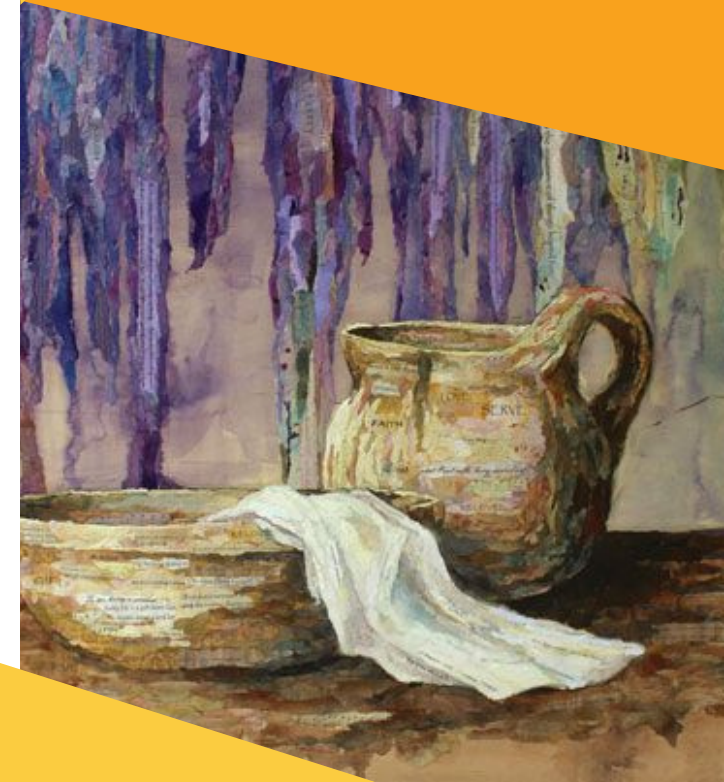


Email

office@fbcwboro.org



FBW DEACON MINISTRY TEAMS



Join a team!

If you would like to join one of our deacon ministry teams, you can fill out the form below, detach it and drop it in an offering plate or bring it by the church office!

We would love to have you use your gifts as we all work to care for those who are a part of our congregation at First Baptist.

Name: _____

Email: _____

Phone Number: _____

Which team(s) would you like to be a part of?
(Check all that apply):

- | | |
|--|---|
| <input type="checkbox"/> Connections | <input type="checkbox"/> Meals |
| <input type="checkbox"/> Grief Support | <input type="checkbox"/> Prayer |
| <input type="checkbox"/> Homebound | <input type="checkbox"/> Small Jobs/
Rides |
| <input type="checkbox"/> Hospital Care | |

Ministry Teams



CONNECTIONS TEAM

Members of this team will make regular, personal contact with church members by making phone calls and sending cards. The Connections Team will act as a switchboard, as they will pass along pertinent information they learn during their monthly contacts to other ministry teams and the church staff.



GRIEF SUPPORT TEAM

Members of this team will offer support to those who are active among us when they experience the loss of a loved one. They will contact the family in the days following their loss and offer support by reaching out to other teams to provide meals, rides, etc. They will also follow up with the family in the months after this loss and on significant dates related to the loss of their loved ones (birthday, wedding anniversary, death anniversary, etc).



HOMEBOUND TEAM

Members of this team will support members of our church who are not able to physically gather with us but are still very much a part of our church. Team members are assigned specific individuals in order to foster deeper relationships with them through phone calls, in-person visits, and regular contact.



HOSPITAL CARE TEAM

Members of this team will care for and support church members who are in the hospital and their family members. They may visit the individual during their hospital stay, or visit them once they have returned home or have transitioned to a rehab facility. They may also offer support to family members by working with the meals or rides/small jobs team to provide support.

MEALS TEAM

Members of this team help provide meals to church members who have experienced a health event, a loss in the family, the arrival of a new child, or might just need a little support in the form of meals. Team leaders will coordinate the meals using a meal train. Team members will be contacted when a need for meals arises and will sign up on the meal train.



PRAYER TEAM

Members of this team intentionally take time to pray for those who are on our prayer list. They pray for specific concerns throughout the week and send notes of support to members who have requested prayers. They may utilize the church's prayer room if they wish. Confidentiality is a priority for members who serve on this team.



SMALL JOBS/RIDES TEAM

Members of this team can be contacted to help with small household jobs, like changing hard to reach lightbulbs, light furniture moving, yard work, or other needed tasks. This team can also provide transportation to and from worship services and other church activities for those who may be unable to drive.



For more information about any of our ministry teams, you can contact the church office or any of our deacons!